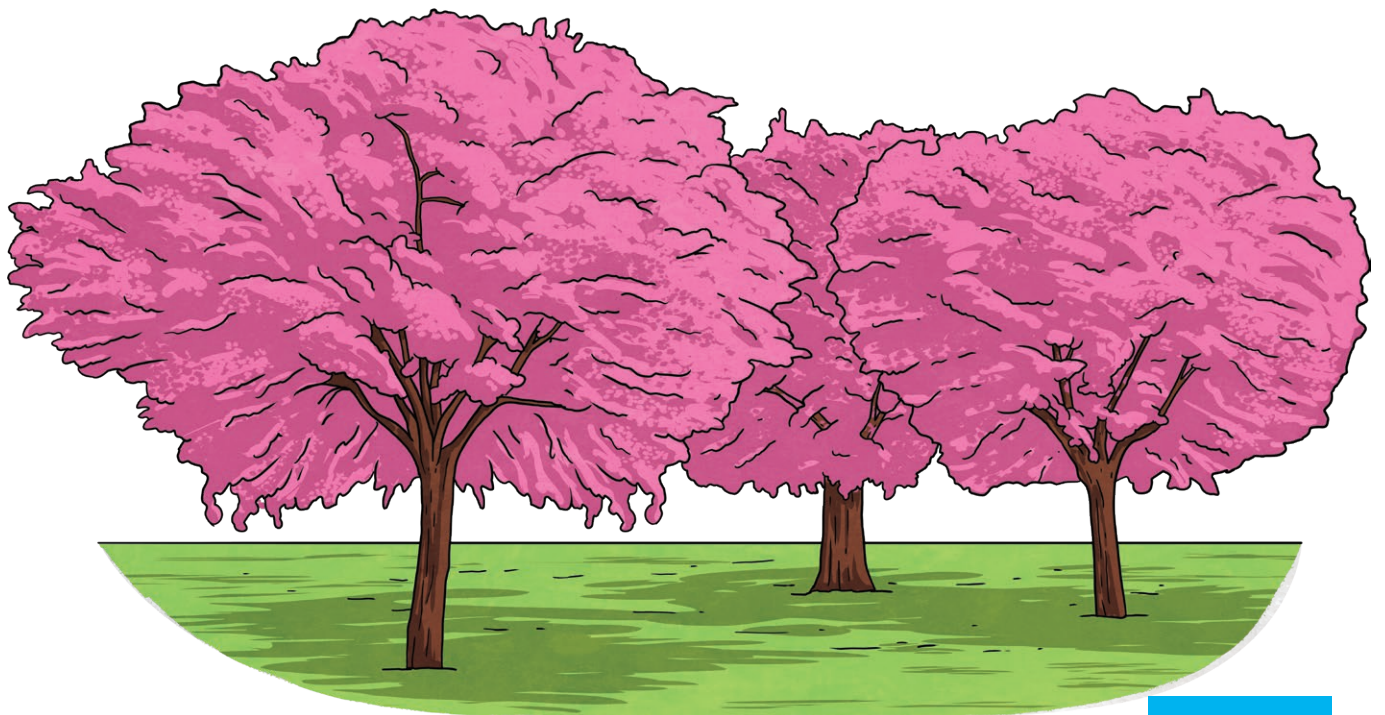


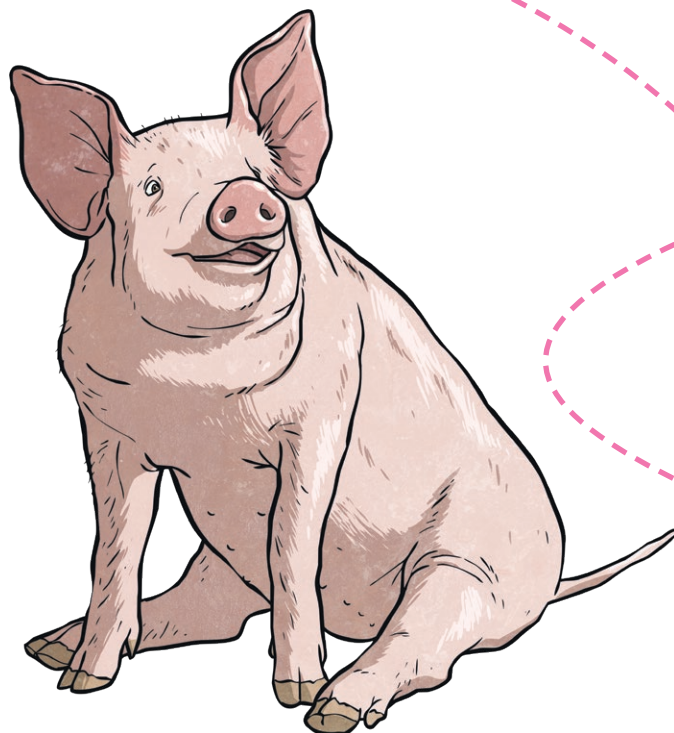
# Similes

A simile is a comparison of two things using the words “like” or “as” to compare them. For example - The cherry tree blossoms were pink like candy floss.



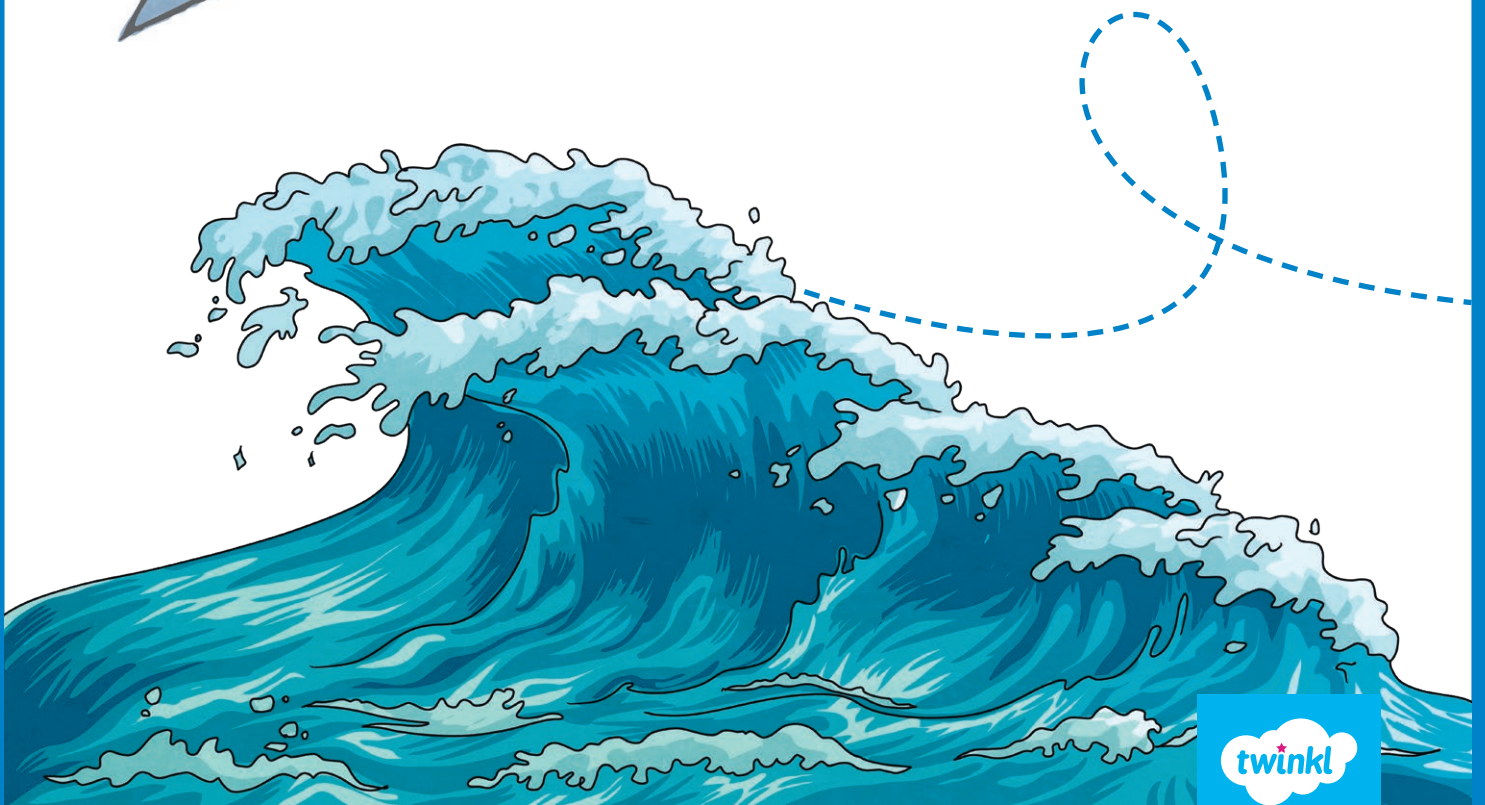
# Metaphors

**A metaphor compares two things but the comparison is not literal. For example - My brother is the biggest piglet I know.**



# Personification

Personification is when you add a human quality to a non-human object. For example-  
The waves raged in the storm sending seafoam everywhere.



# Onomatopoeia

Onomatopoeia is a word that resembles the sound it describes such as bang, crash, whizz, pop!



# Hyperbole

A hyperbole (said hi-per-bowl-lee) is a special word in writing that means to exaggerate something for effect. For example - the tiers of the cake reached up to the sky.

